

EMC Components

Ferrite Beads

SMD Array

MZA Series MZA1210 Type

Size: JIS/IEC 1210, EIA 0504

FEATURES

- A single MZA series chip provides noise attenuation for two lines, making it ideal for use with I/O lines of various highly miniaturized.
- Electronic equipment, such as portable products, which comprise high density circuitry.
- Low crosstalk between adjacent circuits.
- Internal electrodes feature low DC resistance, minimizing wasteful power consumption.
- Electroplated terminal electrodes accommodate both flow and reflow solderings.
- Monolithic structure ensures high reliability.
- The products contain no lead and also support lead-free soldering.

APPLICATIONS

High-frequency noise countermeasure in computers, printers, VCRs, televisions, portable telephones, and other equipment.

PRODUCT IDENTIFICATION

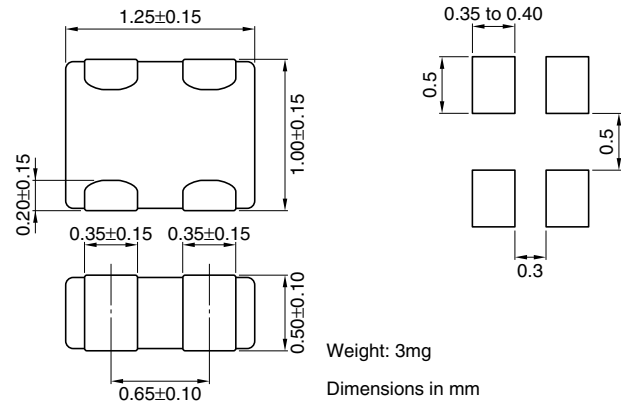
MZA 1210 D 121 C T
 (1) (2) (3) (4) (5) (6)

- (1) Series name
 (2) Dimensions L×W
 (3) Material code
 (4) Nominal impedance
 121:120Ω at 100MHz
 (5) Characteristic type
 (6) Packaging style
 T:Taping

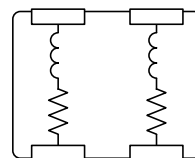
ELECTRICAL CHARACTERISTICS

Part No.	Impedance(Ω) ±25%[100MHz]	DC resistance(Ω)		Rated current (mA)max.	Rated voltage (V)max.
		max.	typ.		
MZA1210D330C	33	0.3	0.2	50	5
MZA1210D680C	68	0.5	0.3	50	5
MZA1210D121C	120	0.8	0.45	50	5
MZA1210D241C	240	1.2	0.8	50	5

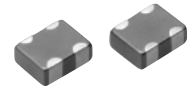
SHAPES AND DIMENSIONS/RECOMMENDED PC BOARD PATTERN (REFLOW SOLDERING)



CIRCUIT DIAGRAM



• No polarity



TEMPERATURE RANGES

Operating/storage -55 to +125°C

PACKAGING STYLE AND QUANTITIES

Packaging style Quantity
 Taping 5000 pieces/reel

EMC Components

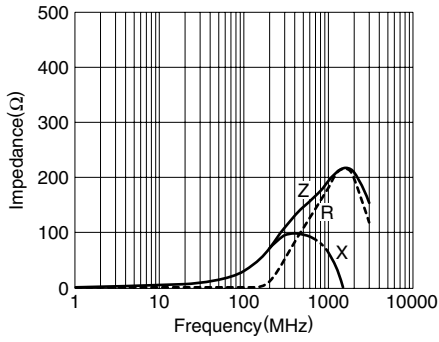
Ferrite Beads
SMD Array

MZA Series MZA1210 Type

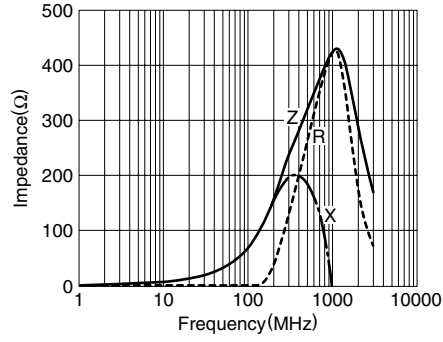
Size: JIS/IEC 1210, EIA 0504

TYPICAL ELECTRICAL CHARACTERISTICS Z, X, R vs. FREQUENCY CHARACTERISTICS

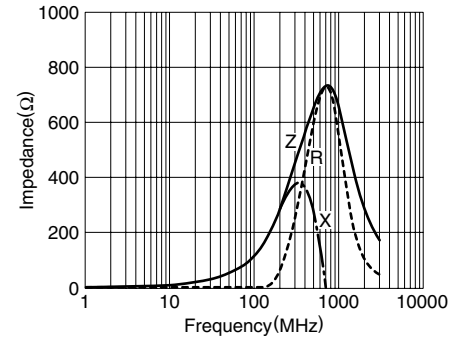
MZA1210D330C



MZA1210D680C



MZA1210D121C



MZA1210D241C

