

EMC Components

MEM-W Series MEM2012W Type

3-Terminal Filters For Signal Line and DC Power Line SMD

These SMD Type 3-terminal filters are used for elimination of high frequency noise from signal lines. Due to a higher cutoff frequency than earlier SMD type 3-terminal filters and steep attenuation characteristics, these filters are effective for elimination of a high level of high frequency noise.



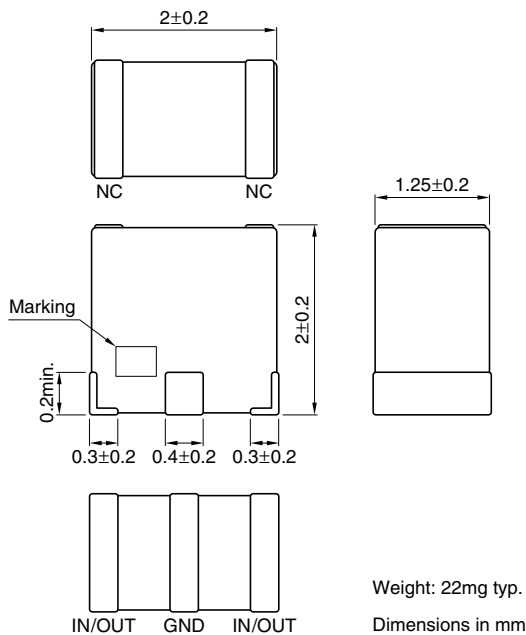
FEATURES

- Steeper and wider bandwidth attenuation characteristics than earlier type.
- Used for high cutoff frequency applications.
- Small size (2.0×1.25×2.0mm).
- Entirely monolithic architecture.
- Taped-type packaging, so can be used for automatic mounting.

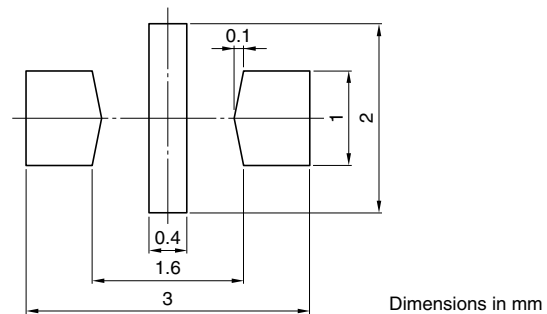
APPLICATIONS

Signal line noise elimination for PCs, liquid crystal panels, printers, game machines, cellular phones, DVCs, etc.

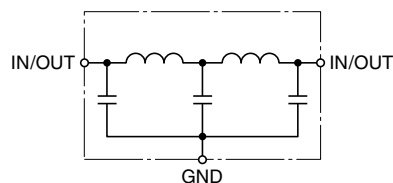
SHAPES AND DIMENSIONS



RECOMMENDED PC BOARD PATTERN



CIRCUIT DIAGRAM



ELECTRICAL CHARACTERISTICS

Part No.	Cutoff frequency (MHz)	Rated voltage Edc(V)max.	Rated current (mA)max.
MEM2012W121R	120	10	100
MEM2012W151R	150	10	100
MEM2012W181R	180	10	100
MEM2012W211R	210	10	100
MEM2012W241R	240	10	100

PACKAGING STYLE AND QUANTITIES

Packaging style	Quantity
Taping	1000 pieces/reel

TYPICAL ELECTRICAL CHARACTERISTICS

ATTENUATION vs. FREQUENCY CHARACTERISTICS ($Z_0:50\Omega$)

